



Update  
2026

## EJOT ANCHOR FIX®

Anchor dimensioning made easy

Version 2.0.0.31



## Easy download

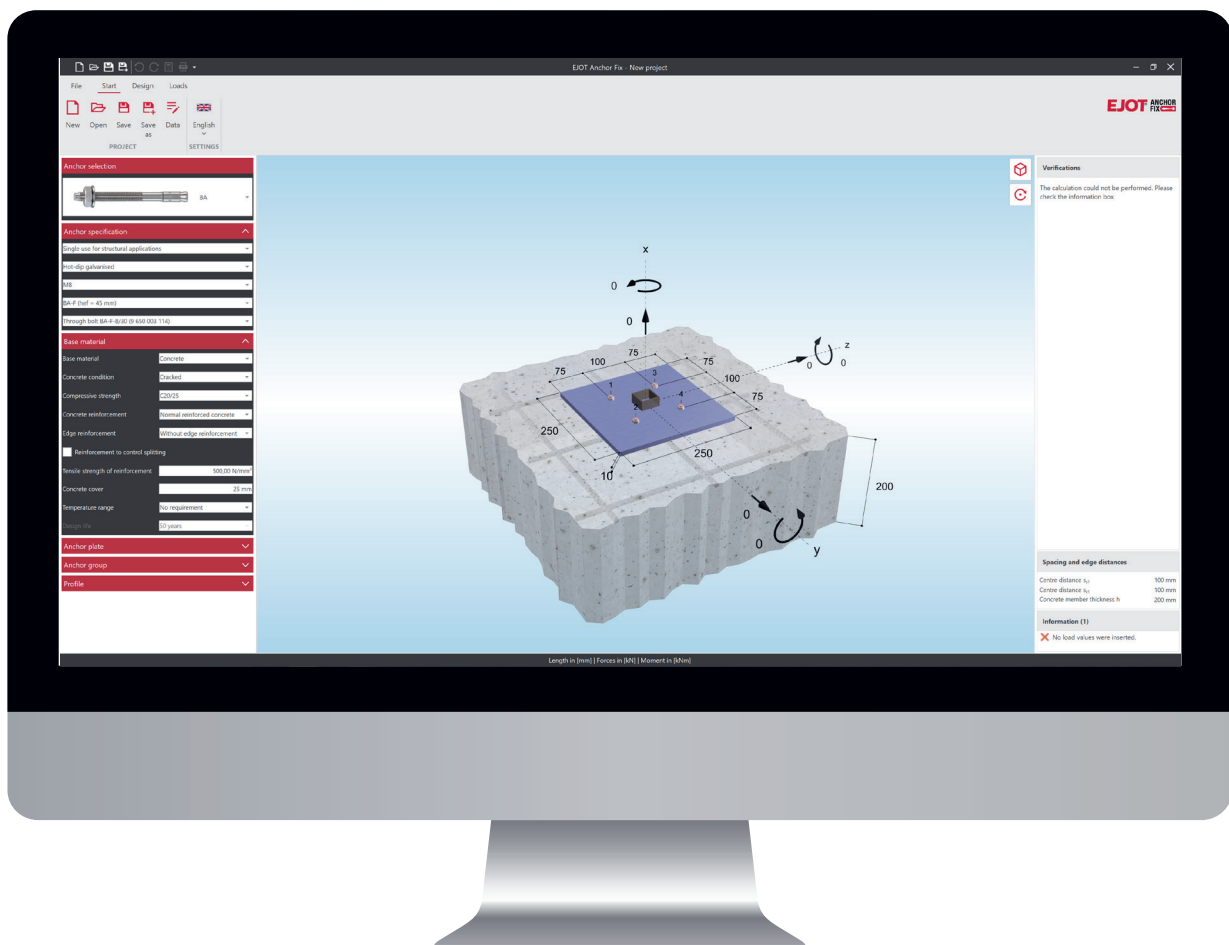
Download EJOT ANCHOR FIX® at [www.ejot.com/software-anchorfix](http://www.ejot.com/software-anchorfix).

It is completely free to download and use, and all updates are also absolutely free.



## Content

Innovations with EJOT ANCHOR FIX®	4–5
EJOT ANCHOR FIX® – easy and efficient	6
#1 New project	7
#2 Data entry	8
#3 Graphic input	9
#4 Results	10
#5 Printing	11



# Innovations with EJOT ANCHOR FIX®

The EJOT ANCHOR FIX® 2026 software is constantly evolving to meet market and user requirements.

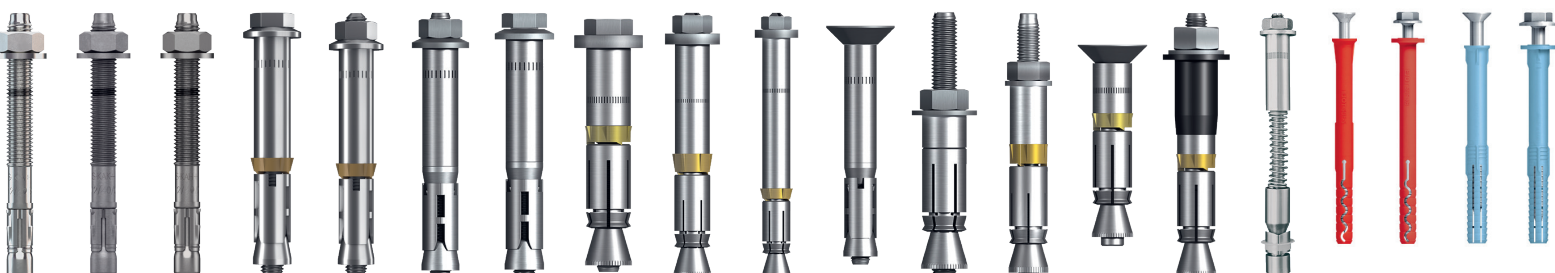


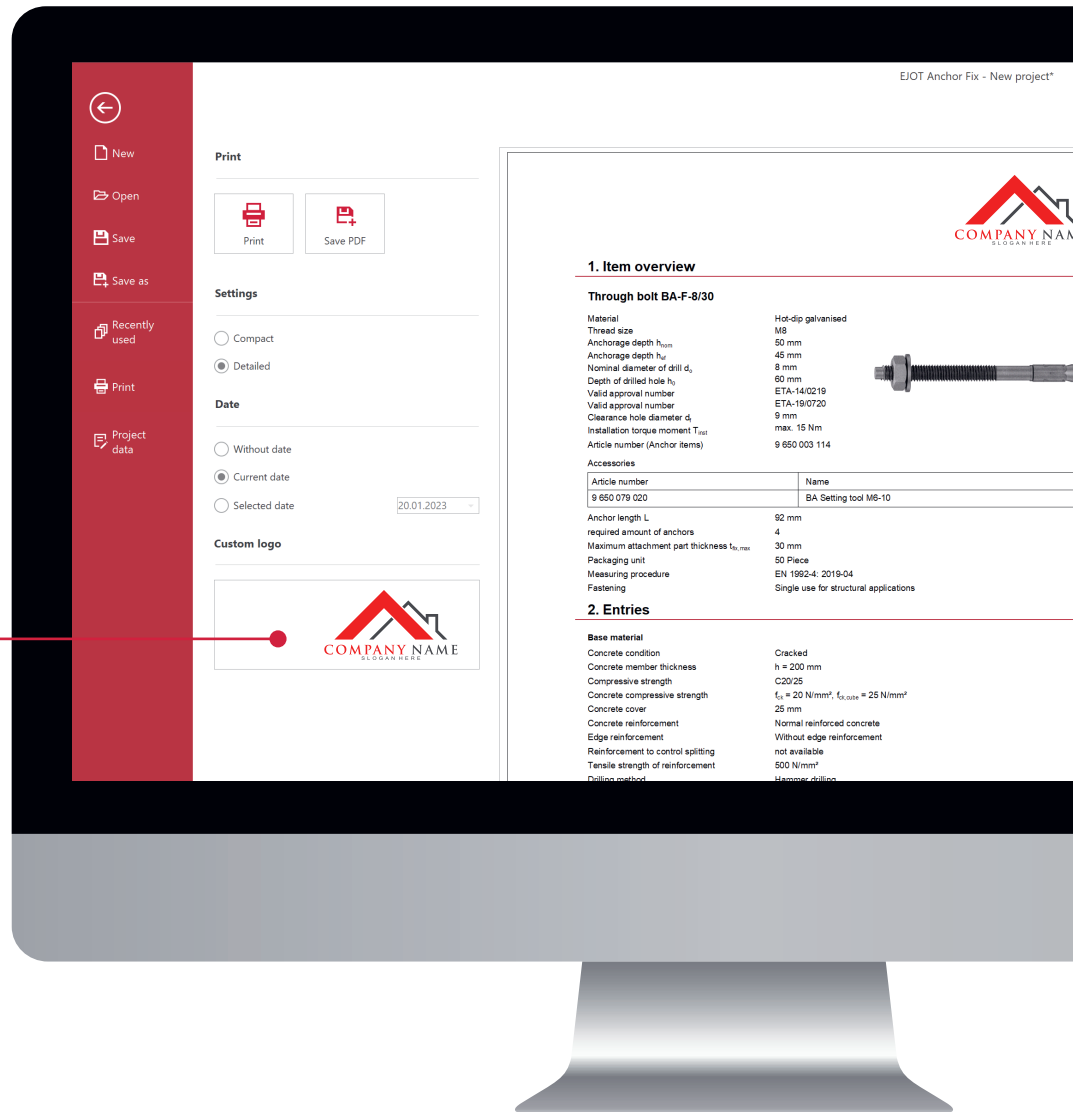
## The latest improvements include:

- > Geometry editor: Allows user defined base plate and anchor positions
- > Annular gap filling: Required to transfer actions on base plates with more than 4 anchors (with an edge distance)
- > Improved C2 seismic resistance for BA Plus through bolts
- > New HSF hybrid resin
- > Uprated data and ETAs

## Keyfacts of the software:

- > Multiple language versions
- > Choice between single and multiple fixing
- > Calculations in concrete
- > Calculations in pre-stressed hollow core slabs
- > Calculations in masonry
- > Illustrations of the different fixing substrates help to select the right anchor
- > Problem-free input of results from pull-out tests
- > Display of compatible accessories and alternative anchors in addition to ETAs and product data sheets
- > Specification of the required quantity of injection mortar
- > Insertion of your own logo into the finished calculation
- > Mouseover graphics for detailed information





# EJOT ANCHOR FIX® – Anchor dimensioning made easy

EJOT ANCHOR FIX® is a simple and efficient dimensioning software for heavy duty anchorages. It was developed to simplify the work of civil engineers, planners and technicians. As an EJOT ANCHOR FIX® user you can make complex calculations in no time, because although EJOT ANCHOR FIX® is a powerful software with dozens of functions, it is still easy to use.

With EJOT ANCHOR FIX® you can compare different options for attachment, calculate the safest option, choose the right products for each project and you ultimately get all results summarised in one document.

## User-friendly

The user interface of the dimensioning software is very simple and logically structured. It is clearly divided into the following five sections:

Project, data entry, graphical input, results, printing.

The software supports you in the processing of your project and provides reliable information for the respective areas of application. After completing the calculations, all information can be saved as a PDF file or printed out.

## Reliable heavy duty fixing

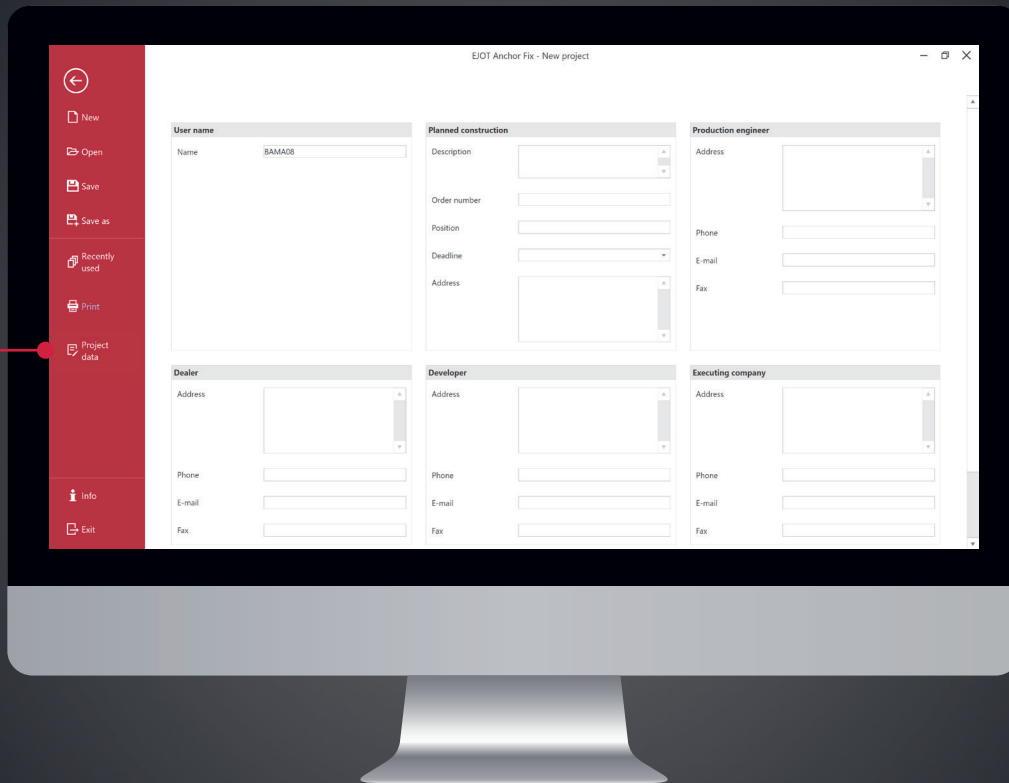
EJOT ANCHOR FIX® is constantly being improved and updated to meet market and user requirements. New products and a supplemented range make calculations even easier.

## Equipped with special functions

With EJOT ANCHOR FIX®, you can make complex calculations in no time. In addition to the user-friendly interface, some very practical special features are available to you. EJOT ANCHOR FIX® offers numerous recommendations and hints as well as additional technical information about each product. Product images with detailed technical information can be conveniently enlarged.

## Constant online updating

EJOT ANCHOR FIX® is made even better by continuous expansion of the product range. In addition, EJOT ANCHOR FIX® now also includes the new lengths of the diameter 6 JC2 concrete screw in all versions as well as the JC2 PLUS concrete screw.



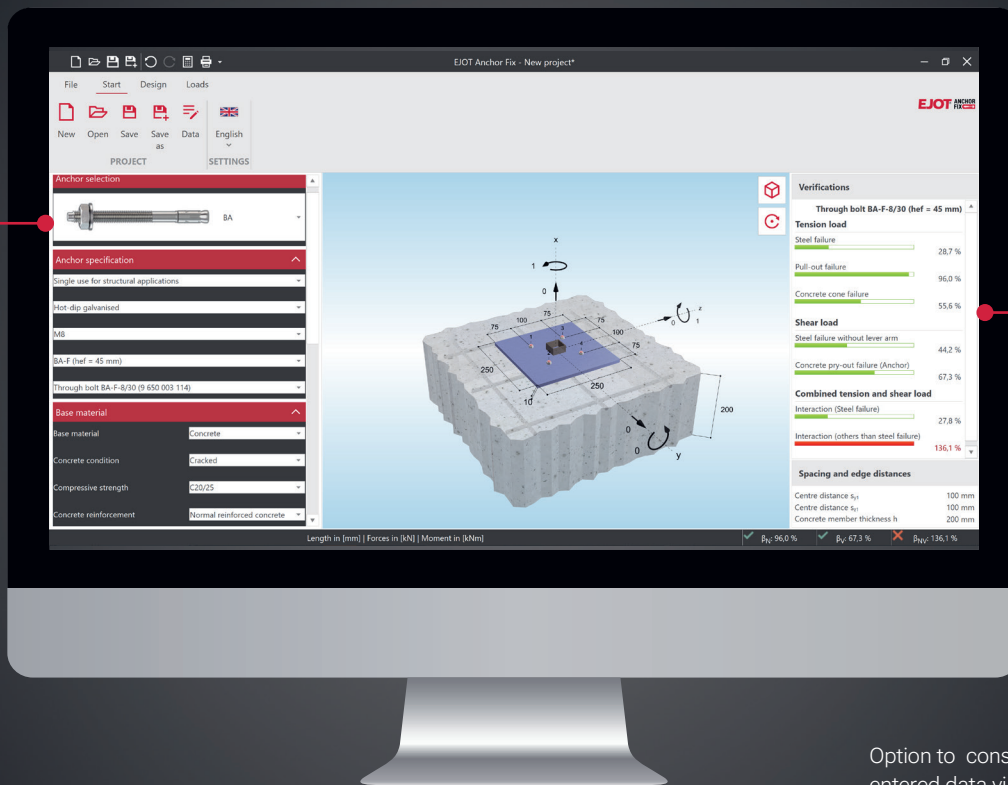
Capture the project data

## #1 New project

### First steps

All project-related information is recorded in this area, such as project name, order number, designer, client, brief information from the contractor and more. All entered information can be saved and used again and it will also be visible on report.

Display of the currently selected product



Option to constantly check entered data via interactive display of the calculation

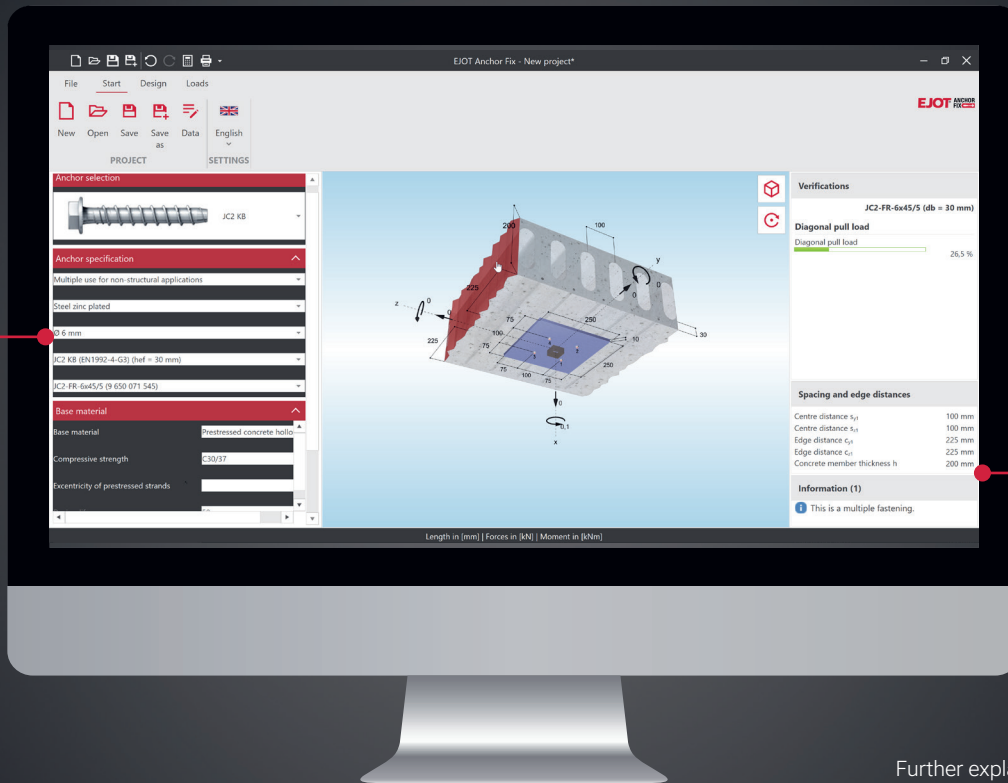
## #2 Data entry

### Clear representation

All information related to the calculation is listed in the form of a table – from the concrete compressive strength to the reinforcement and geometry to the type of fixing and occurring loads. In addition, the following options are available:

- > Choice between single and multiple fixing
- > Calculations in concrete or masonry
- > Calculations in pre-stressed hollow core slabs

Further accessories can be individually selected in the header according to size, type or material. An image of the selected product is always displayed together with the entered parameters.



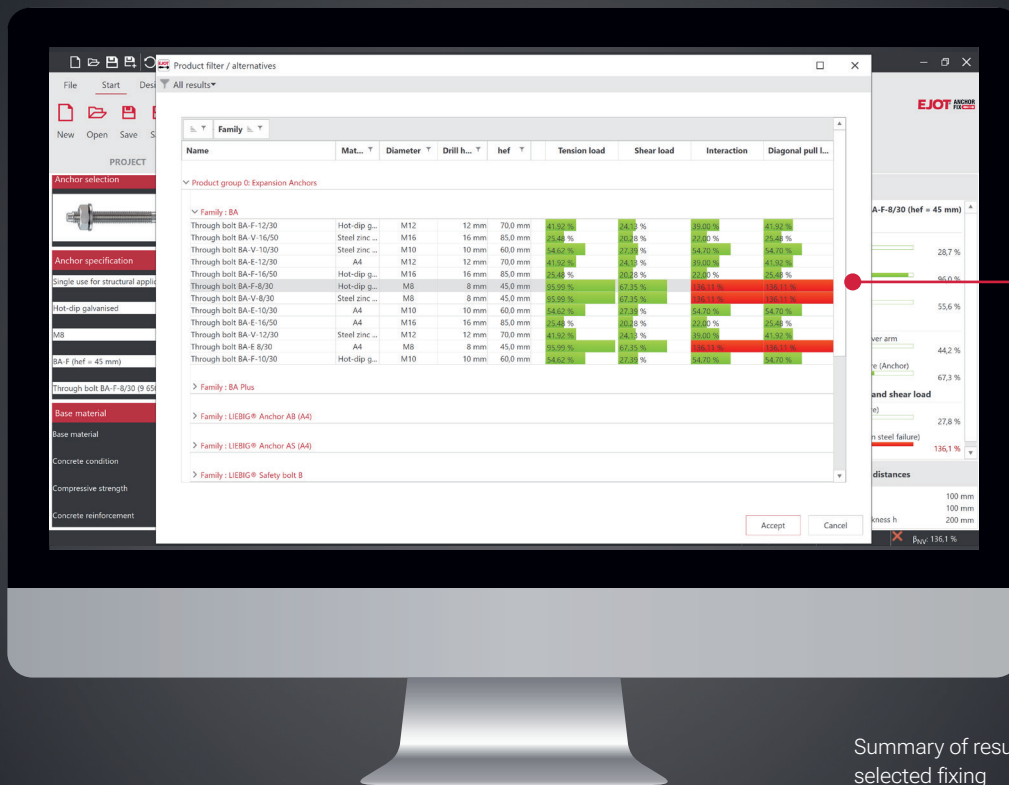
Pre-filled fields with suggestions make your work easier

Further explanations and details, if required

## #3 Graphic input

### Simple recording of the loads

All relevant information can either be entered directly in the graphic or by clicking on the "Loads" tab in the header. The graphics can be zoomed, rotated or shifted so you can focus gradually on loads or on the substrate.



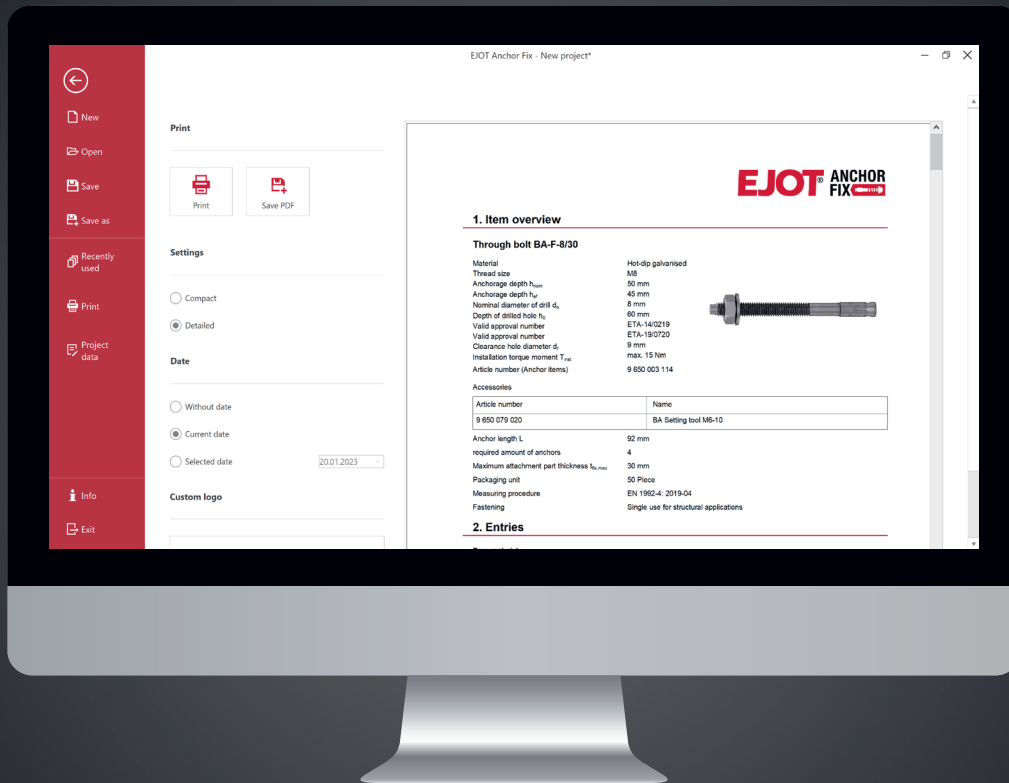
Summary of results for each selected fixing

A green (recommended) or red (not recommended) comment in the result view shows whether a product is suitable

## #4 Results

All information at a glance

- > List view with selected fixings
- > Information about suitable/unsuitable fixings
- > Specification of required mortar quantity
- > Alternatively, detailed information on each selected fastening incl. graphics
- > Listing of all relevant ETAs and product data sheets
- > Presentation of accessories and alternative anchors



## #5 Printing

### More than just dimensioning software

EJOT ANCHOR FIX® not only takes care of your calculations, it also provides accurate and reliable documents that you can integrate into your own documentation. All calculations can be printed directly from EJOT ANCHOR FIX® or saved in a PDF file. The document contains all information and details.



**EJOT SE & Co. KG**

**Market Unit Construction**

In der Stockwiese 35

57334 Bad Laasphe · Germany

T +49 2752 908-0

F +49 2752 908-731

[construction@ejot.com](mailto:construction@ejot.com)

[www.ejot.com/construction](http://www.ejot.com/construction)